

# Sage Timberline Estimating

Better Estimates By Every Measure



## Put your best bid forward.

To win more work and ensure the profitability of every project, you have to build estimates with more speed and precision than ever before. Let Sage Timberline Estimating do the heavy lifting for you. With features like trade-specific databases, Smart Assemblies, and built-in analysis tools you'll build more bids with quick precision.

## Plus, you can integrate estimating with the rest of your business.

Sage Timberline Estimating works in tandem with job cost and accounting in Sage business management software such as Sage Timberline Office. Then, once a bid is approved, the appropriate data feeds seamlessly from estimating to accounting and job cost. No data loss. No redundant entry. As a result, it's easier to share project details with your entire team.

## Speed comes easy.

Sage Timberline Estimating eliminates the drudgery associated with complex calculations and manual, repetitive, and routine estimating tasks. Key features that help you build bids quicker include:

- **Smart Assemblies** guide you through takeoff as the system automatically calculates costs associated with materials, labor, supplies and equipment.
- **Trade-specific databases** provide a quick and easy method for you to add cost items into your bid worksheet.
- **Multiple takeoff methods** offer flexibility and adaption to your preferred style of estimating.
- **Estimating Management Console** organizes your bids for fast, easy access.
- **Microsoft SQL Server database** stores all your data in one place, provides faster queries, and enhances security.
- **Built-in report writing capabilities** helps generate organized, professional reports in seconds.

### BENEFITS

Slash takeoff time by 50% or more compared to manual or generic spreadsheet methods.

Save time on estimate analysis with built-in sort capabilities.

Refine and make last minute pricing adjustments with a few mouse clicks.

Eliminate generic spreadsheet liabilities associated with hidden cells and broken formulas.

Generate professional, winning proposals in seconds.

### Trust the #1 provider of construction software<sup>1</sup>:

- Estimating solutions used by over 5,000 construction firms
- Over 40 years of construction experience built in
- Experienced local partners get you up and running quickly
- Backed by world-class customer support you can count on

# Sage Timberline Estimating

## Better Estimates By Every Measure

### Profitability with precision.

When you think of Sage Timberline Estimating, one word ought to come to mind: Bull's-eye. The software provides precise calculations and costs across all aspects of the bid including: labor, supplies, subcontractor bids, materials, equipment, and even overhead and profit. Key features that improve bid accuracy include:

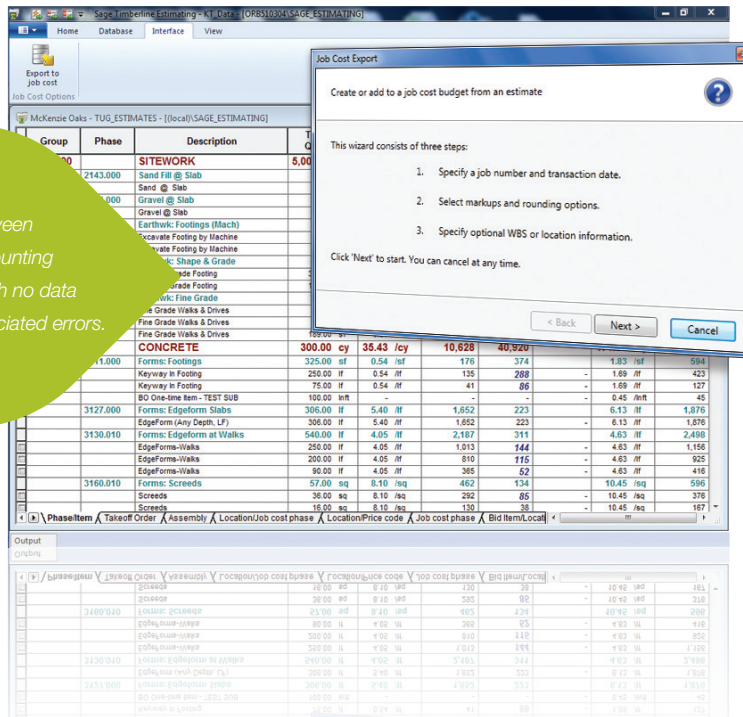
- **Pre-built trade databases** with current pricing and productivity factors.
- **Standardized estimating tools and processes** bring consistency to your entire estimating team.
- **Bid worksheets and Smart Assemblies** perform calculations automatically—eliminating common sources of generic spreadsheet errors resulting from hidden cells and broken formulas.

### Integration improves data sharing and project collaboration.

Sage Timberline Estimating integrates with Sage business management software such as Sage Timberline Office. Once a bid is accepted, all the right data flows to accounting and job cost automatically. This out-of-the-box integration enables you to:

- **Eliminate redundant data entry** and wasted time.
- **Speed project transition** and ensure a quick start as project responsibility changes hands.
- **Make it easier to collaborate and communicate** project details across your team.
- **Enhance bid accuracy** by providing estimators with access to historical data such as “estimated vs. actual” figures.
- **Improve decision-making** by providing managers with fast access to job cost and budget vs. actual reports.

Share data between estimating, accounting and job cost with no data re-entry or associated errors.



### Sage Construction and Real Estate

15195 NW Greenbrier Parkway | Beaverton, OR 97006 | 800-628-6583 | www.SageCRE.com



1 Sage Construction and Real Estate product lines were recognized as the most widely used applications for construction estimating, job costing, accounting, payroll, and project management, according to the Construction Financial Management Association (CFMA) 2010 Information Technology Survey for the Construction Industry.